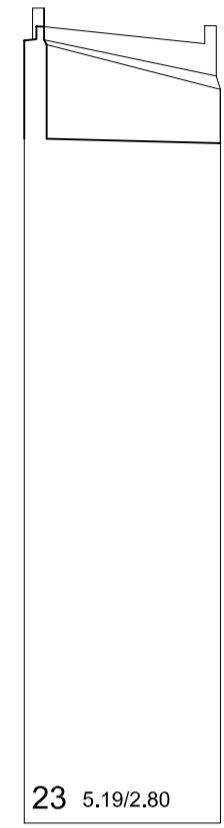


23 42.53/14.20

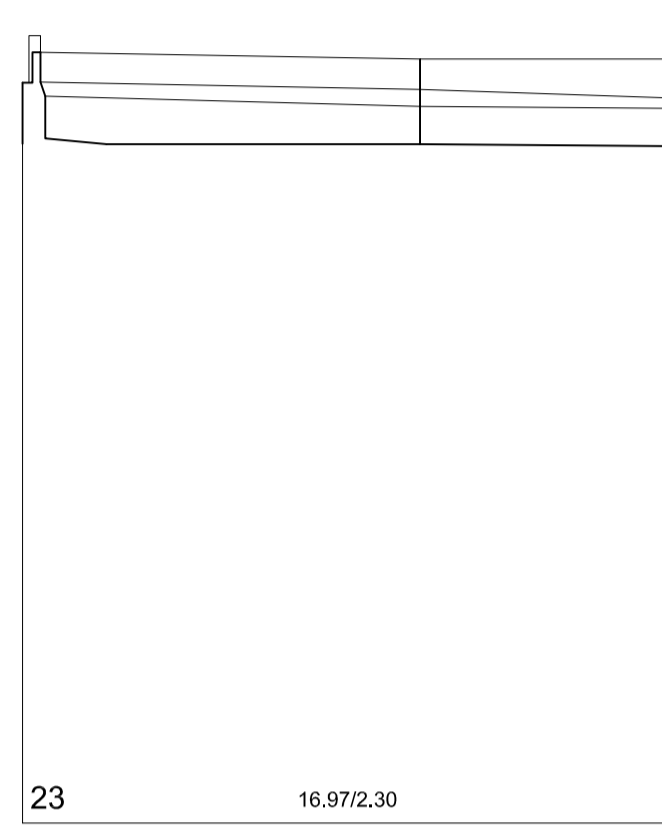
Lateral do Asilo



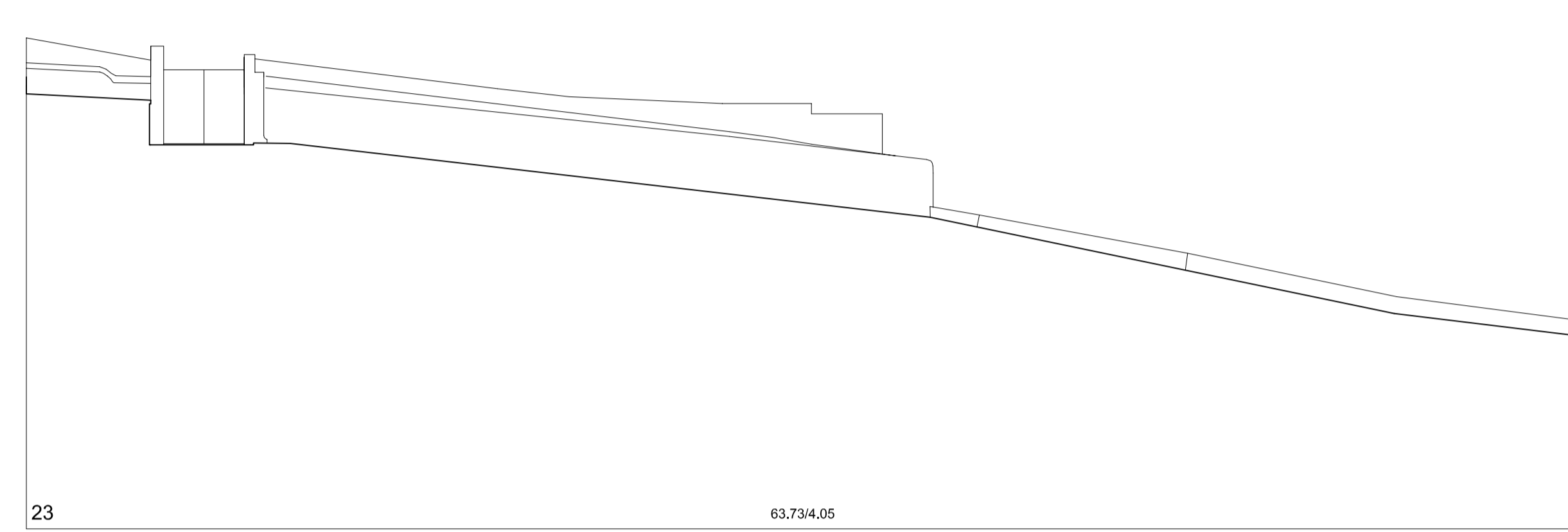
23 5.18/2.80



23 6.45/2.50

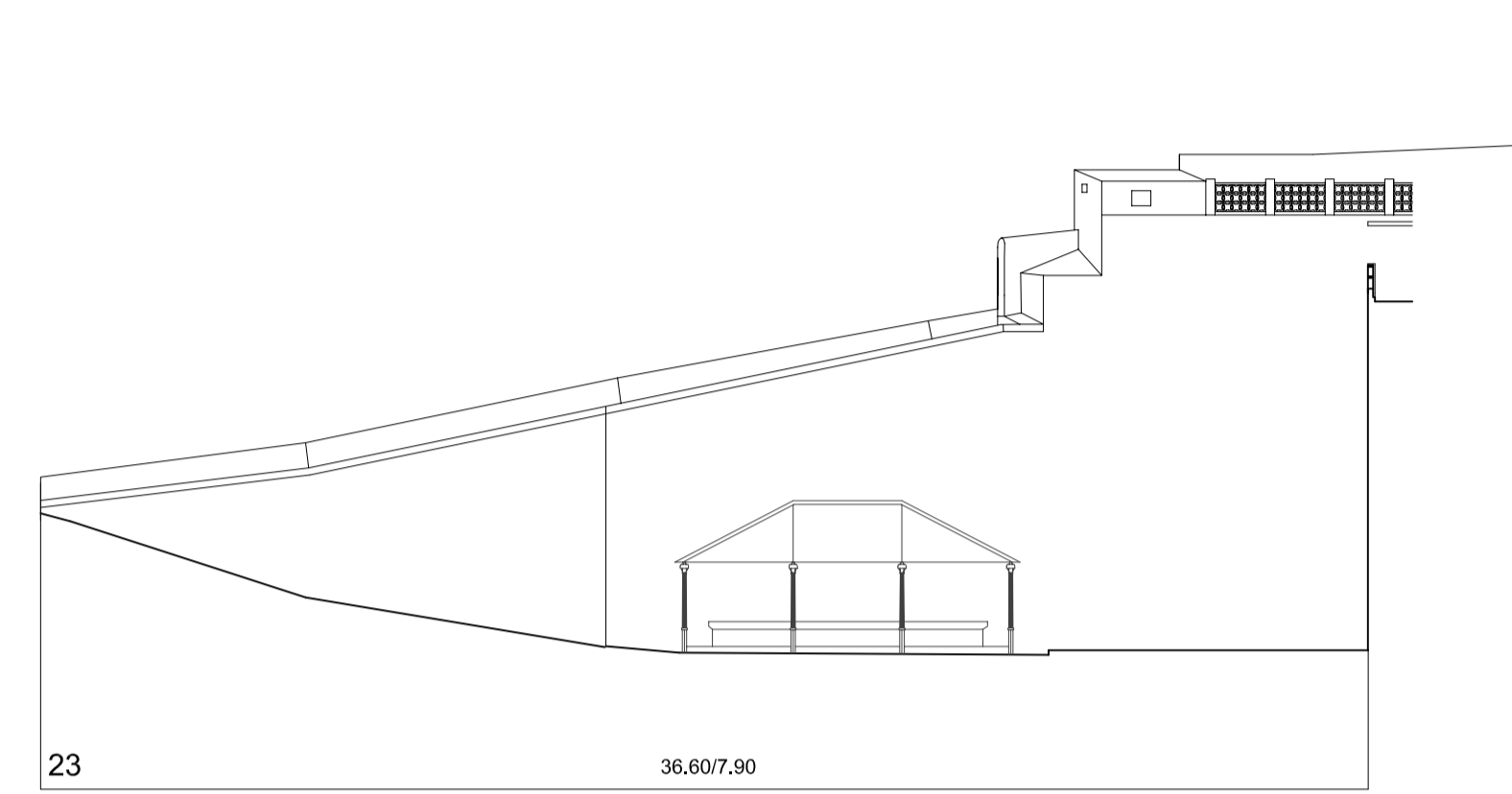


23 16.97/2.30

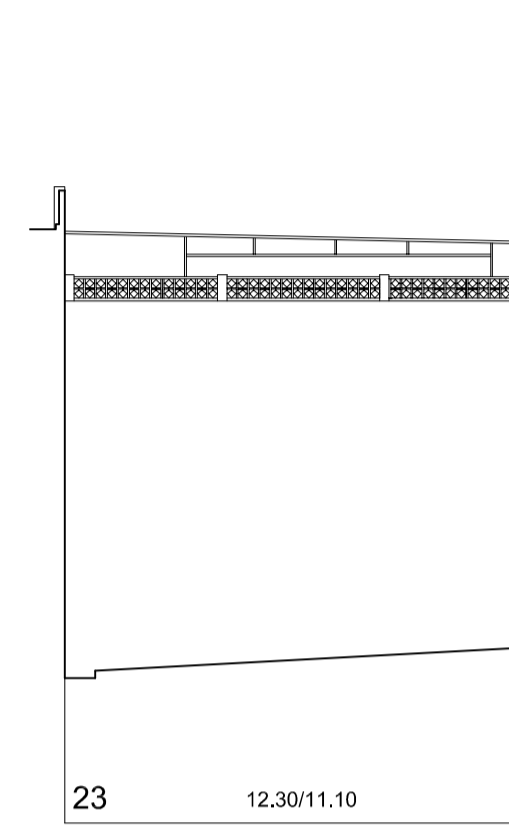


23 63.73/4.05

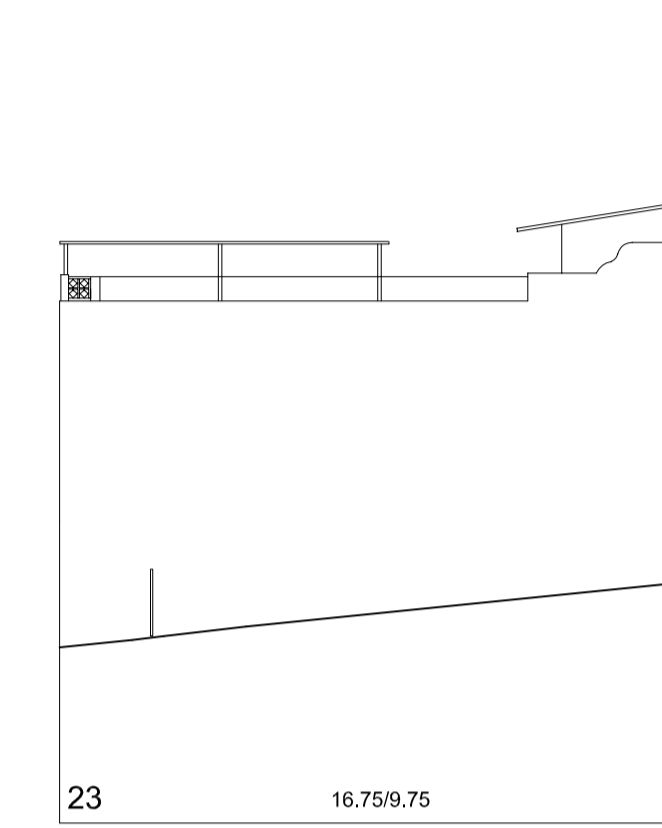
Rúa Poboadores



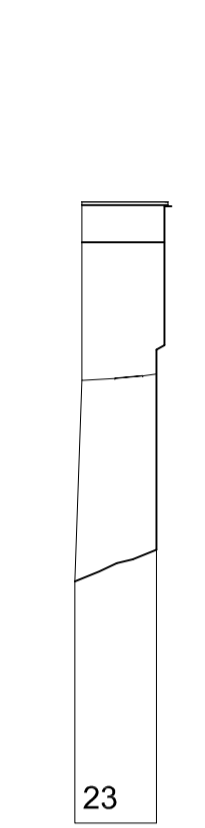
23 36.60/7.90



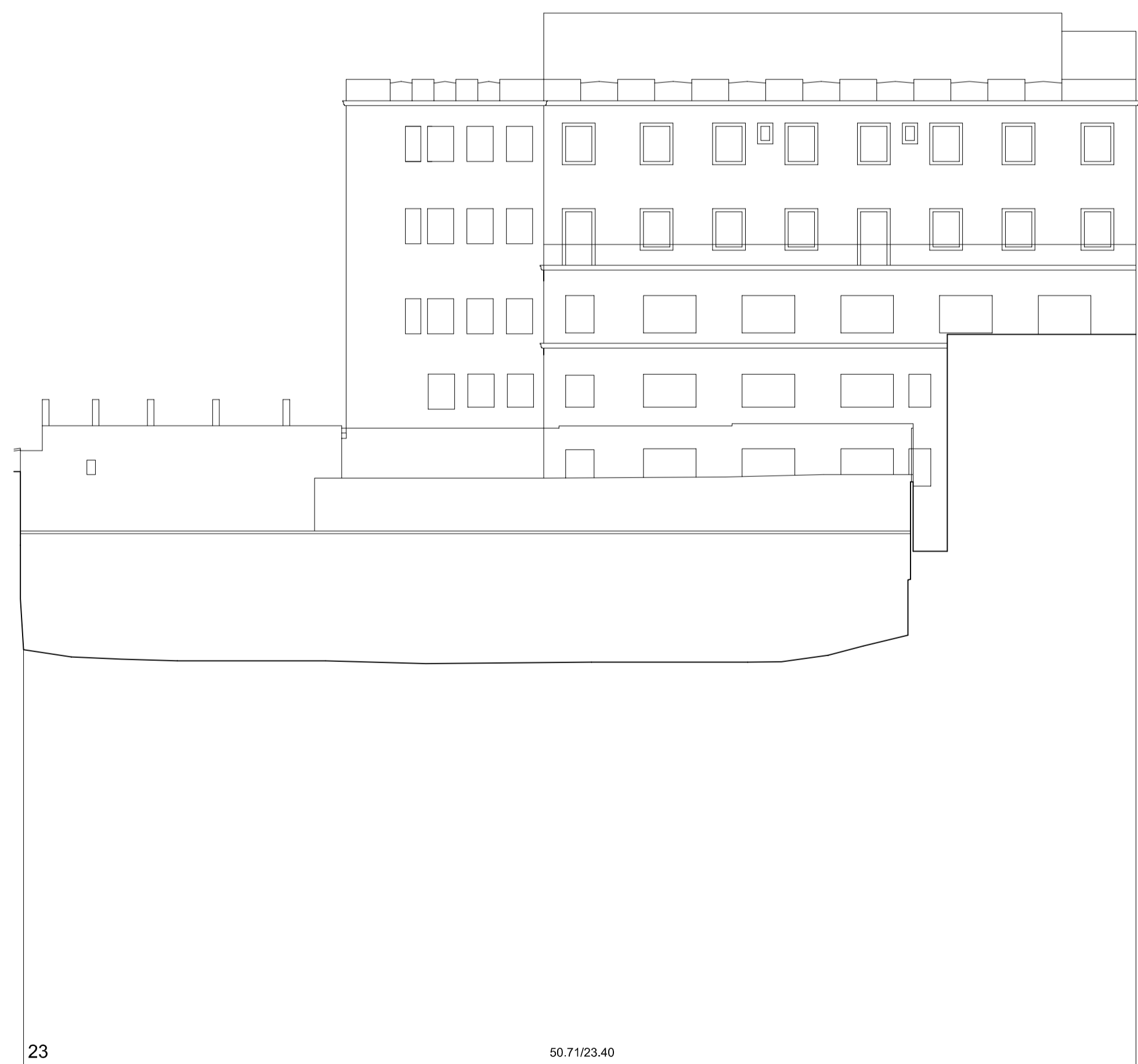
23 12.30/11.10



23 16.75/9.75

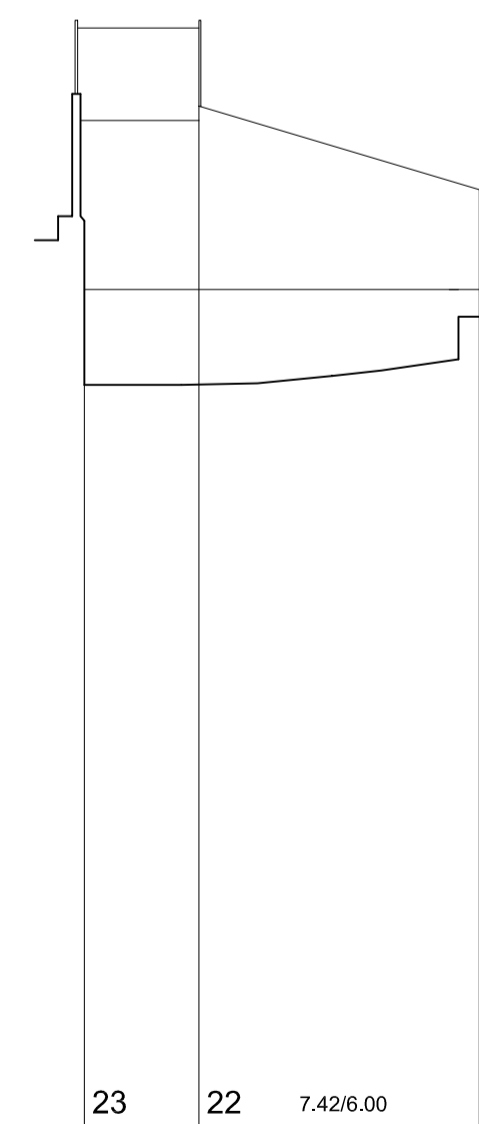


23 2.15/9.45



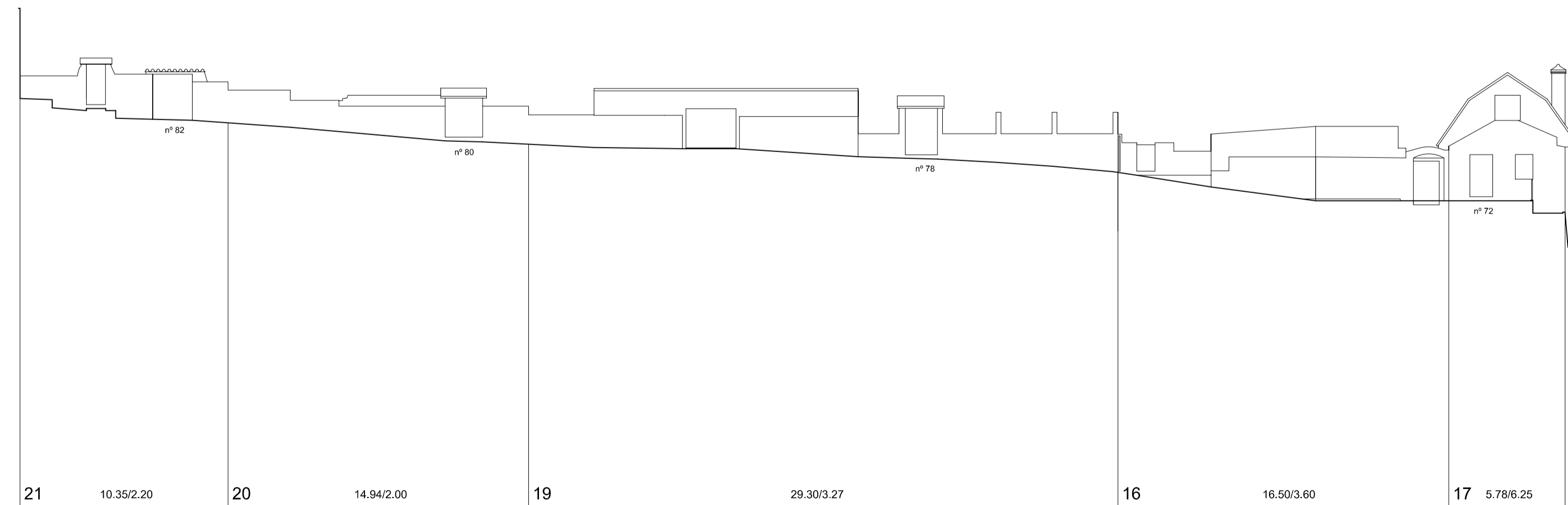
23 50.71/23.40

Traseira do Asilo



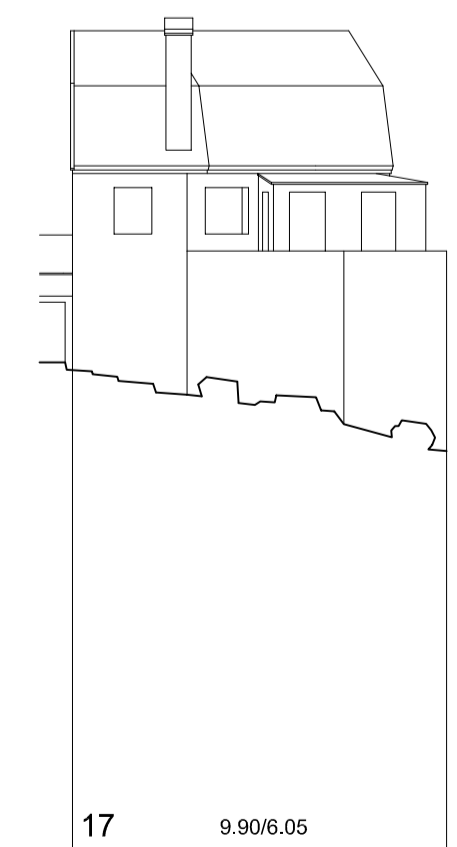
23 22 7.42/6.00

3.02/7.00

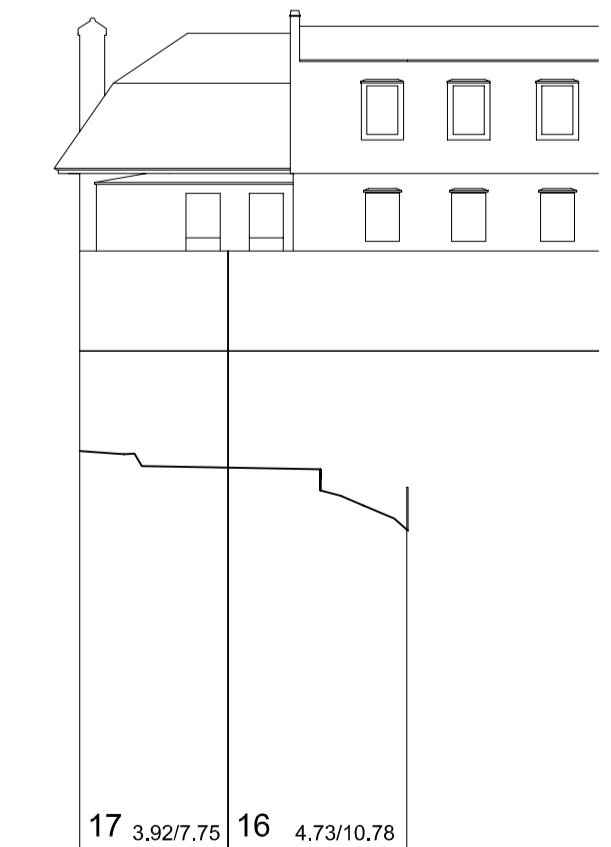


21 10.35/2.20 20 14.94/2.00 19 29.30/3.27 16 16.50/3.60 17 5.78/6.25

Rúa dos Poboadores



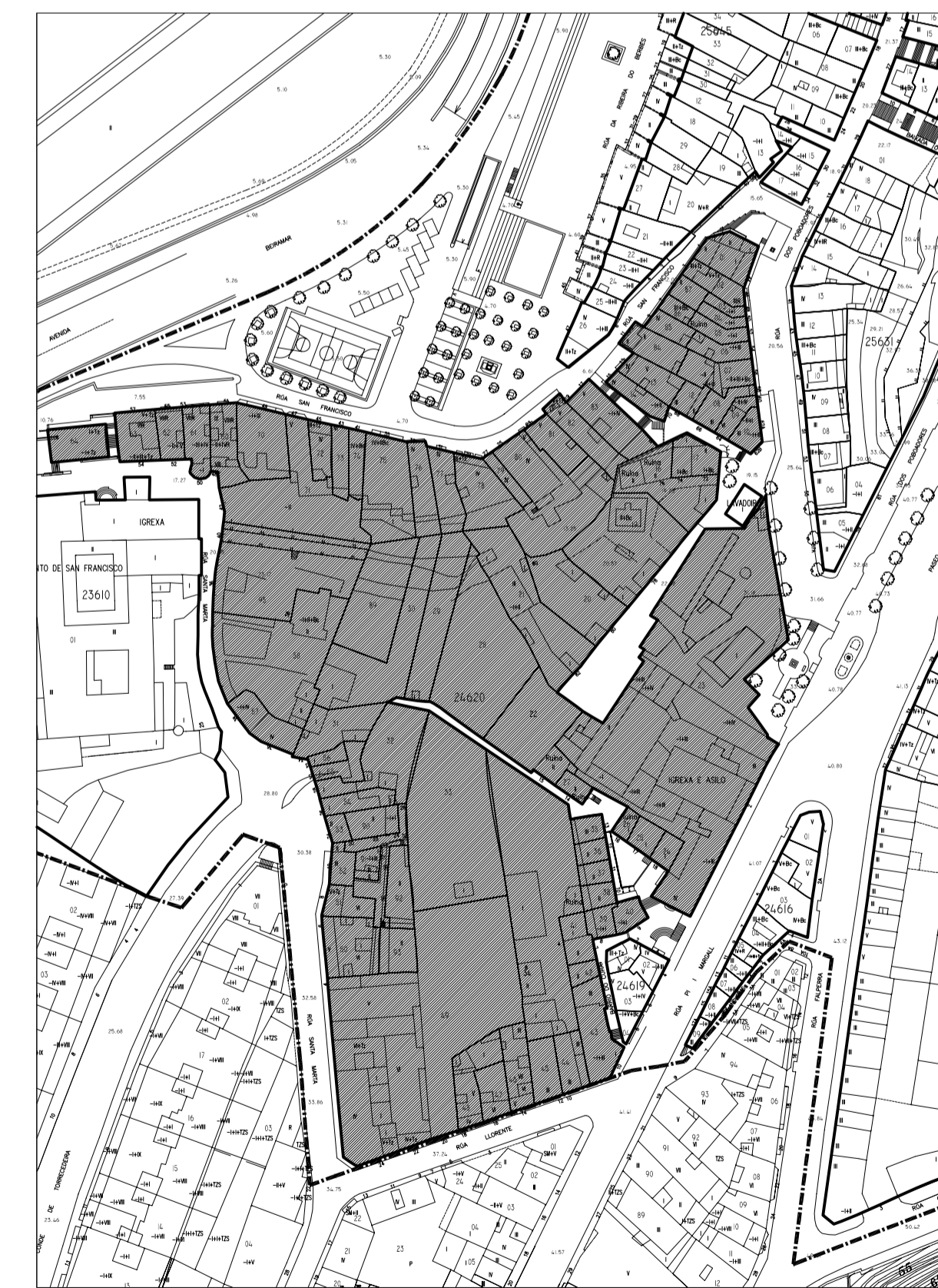
17 9.90/6.05




17 3.82/7.75 16 4.73/10.78



83 24.72/11.75



Nº PARCELA FRENTE PARCELA/TALLER DE CORNISA (COTAS EN METROS)

 PLAN ESPECIAL DE PROTECCIÓN E REFORMA INTERIOR CASCO VELLO DE VIGO		FASE: APROB. DEFINITIVA
PLANOS DE INFORMACIÓN TÍTULO: ALZADOS. ESTADO ACTUAL. COUZADA 24620		PLANO Nº 3.4-E ESCALA 1/200
CONSULTORA GALEGA, S.L. RUA SAN MARTÍN, 14 36003 PONTEVEDRA T. 966 85 89 57 FAX 966 85 89 58 Email: consultora@consulgalego.com		DATA: DICIEMBRE 2006